



The Glenfarg Newsletter

Issue 247 December 2020

Suggested Donation £1

Contents	Advertise In The Glenfarg Newsletter
Editorial..... 3	You can advertise in the Newsletter for very reasonable rates as below which are annual i.e. 4 issues.
Contacts..... 4	Full Page £70 per annum
Village Hall Groups..... 6	Half Page £35
Arngask Church News 8	Quarter Page £20
Christmas Tree Appeal 12	Single issue advert prices available on request.
Community Centre News..... 14	Advert enquiries should be made by initially contacting the editorial team.
Glenfarg Tennis Club..... 16	
Glenfarg Folk Club..... 18	Editor
The GITs..... 20	Robin Watson 830 355
Halloween..... 24	newsletter@glenfarg.org
Glenfarg Community Cinema.... 26	Treasurer
New Cub Scout Leader..... 30	Daniel Horsman 830 067
Jan Macpherson..... 32	Distribution
Farming In Lockdown..... 34	Glenfarg Village Store 830 823
G.D.I.B..... 38	Front Cover
Growing Wild In Glenfarg..... 39	Editor
Village Hall AGM Agenda..... 43	The views expressed by contributors to this newsletter are entirely their own. Publication within this newsletter does not imply that the Editors or Community Council agrees with, or supports, those views. The editor will not be held responsible for any factual inaccuracies, or incorrect inferences drawn.
C.Council. AGM Minutes..... 45	Advertisements in the Newsletter are accepted in good faith. The Community Council and the editor are not in any way endorsing the businesses advertised in this publication.
Community Council Minutes..... 57	DEADLINE FOR NEXT ISSUE
Index Of Advertisers..... 67	If you want to contribute to the Newsletter here is how to calculate the deadline. It is published on the 1st March, 1st June, 1st September and 1st December.
General Information..... 68	Copy should be submitted before the 15th of the month prior to the upcoming publication.
	email to newsletter@glenfarg.org

Editorial

It is with great sadness I report the passing of friend and neighbour Jan Macpherson. Jan was instrumental in starting up the Newsletter you have in your hand today. Read about her contribution to the village on page 32.

It's been a year of strange days hunkered down in the house. The cover picture is one I took some time ago in Edinburgh in happier Christmas times when social distancing was not an issue.

Glenfarg as a community has found many ways of dealing with the restrictions on lifestyle. The folk club has gone digital and so has the community cinema. With the facilities offered by Zoom and Facebook, virtual meetings and even performances have been possible. Details of how they are delivering a service can be found in articles within.

Halloween with a difference was organised by Alison and Debs to the delight of many youngsters and a report of that night can be found on page 24.

Both the Community Council AGM and the Village Hall Committee meetings were convened digitally and further meetings are arranged. Details of an upcoming virtual meeting for the Glenfarg Community Centre can be read in this issue.

The GITs (Glenfarg improvement team) are going strong. Their latest project is clearing the north verge of the Main Street and establishing a wild flowers meadow there.

Emma Cheape has another excellent article on farming in lockdown. Emma is a talented, professional photographer and has graciously allowed the use of her photographs in the newsletter.

Finally, have a wonderful Christmas and a healthy New Year.



Robin Watson

e-mail: newsletter@glenfarg.org

Contacts

Service/Organisation	Contact Name/ Email Address	Telephone
Community Council	Chairperson: Margaret Ponton	830 611
	Secretary: Ian Pilmer secretary@glenfarg.org	830 817
P&K Councillor	Cllrs. Barnacle, Watters, Purves and Robertson	See P&KC website
Police	Non emergency contact number	101
	Crimestoppers	0800 555 111
Household Utilities	Scottish Water Helpline	0800 0778 778
	Scottish Hydro Electric Helpline	0800 300 999
Dog Warden	Kirsteen Mackenzie	01738 476476
PA Contact	Mark Crossey	830 201
Arngask Church	Joyce White (Session Clerk) Session.Clerk@ada-church.org.uk	01738 850754
Arngask School	Suzanne Miller (Head Teacher)	867 250
Accordion & Fiddle	Stewart Smith isobelsmith45@btinternet.com	830 6296
Baby & Toddlers	Catherine Mason catherinemason@hotmail.co.uk	07583 022 608
Badminton Club	Alan Clark	830 246
Beavers	Christine Morton	830 210
Bowling Club	Karen Parker glenfargbc@gmail.com	830 529
Bridge Club	Evelyn Brockbank	830 713
Brownies	Jan Pedley glenfargbrownies@gmail.com	830 195

Service/Organisation	Contact Name/ Email Address	Telephone
Chair Yoga	Caroline Waring	830 239
Cubs	Michael Mchardy mike_mchardy_kp@hotmail.com	07847 112281
Curling - Men's	Lorne Findlay	830 441
Curling - Women's	Margaret Jenkins	830 453
Folk Club	Philip Ponton info@glenfargfolkclub.com	830 611
GDIB	Kate Armstrong	830 343
Community Cinema	Janet Watson	830 355
Glenfarg Oil Buying Syndicate	Tom McAulay gobs@glenfarg.org	07786 705261
Knit & Natter	Ineke Watt	830 345
Neighbourhood Watch	Linsey Penman	830 549
Old Folks Association	Philip Ponton	830 611
Riding School	Angela Stocks	830 262
Scouts	Robert Morton robert.morton1@tesco.net	830 210
SWI	Margaret Scott	830 369
Tennis Club	Tim Corcoran tim@taraw.plus.com	830 879
Total Body Circuit	Julie Ramsay jrinsanity@gmail.com	830 370
Village Hall	Isla Craig glenfargvillagehallbookings@gmail.com	830 125
Website	Janet Watson <i>editor@glenfarg.org</i>	830 355
Wine Club	David Aird	830 370
Zumba	Gale Paterson	07823 334 476

A Village Hall for All

Day	Time	Organisation
Monday	9.30am - 11.30am	Baby & Toddler Group
	6.00pm - 7.30pm	Cubs
	8.00pm - 10.00pm	Ladies' Badminton
	7.30pm - 9pm 1st Monday every other month	CC Meeting
Tuesday	9.30am - 10am	Metafit
	5.45pm - 6.45pm	Beavers
	7.30pm - 9.00pm	Scouts
Wednesday	6.00pm - 7.30pm	Brownies
	8.00pm - 10.00pm In winter	Mixed Badminton
	7.00pm - 11.00pm 1st Wednesday of month	Accordion & Fiddle Club
Thursday	10am - 12 noon	Coffee Morning
	7.30pm 2nd Thursday Sept to May	WRI
Friday	10.00am - 11.00am	Chair Exercise
	7.30pm - 10.00pm 2nd Friday Sept to April	Community Cinema

To check on the Village Hall bookings, go to the village website
www.glenfarg.org
 and look at the on-line calendar under 'Hire the Hall'



Earnside

***U.K. & Continental
Travel***

Tel: 01577 830360

E mail: info@earnside.com

Website: www.earnside.com

Church News



From the Minister:

If we are to believe the old marketing slogan, then Christmas is a time for giving. As I write this, the list of the top ten toys for Christmas have just been released. I noted some familiar favourites which never seem to age like Lego, Monopoly and Barbie but the most coveted children's gift is predicted to be a little green monster all cutely wrapped in sackcloth from Star Wars called 'Baby Yoda'. Alarmingly, I noticed an entry for a 'Pooping Flamingo'. Imagine waking up to find one of those in your stocking, even if it is made from plastic?

Even before the Wise Men made it to the manger, the baby Jesus was to be the recipient of gifts whilst still in the womb. The presents took the shape of intangible things: kindness and hospitality. His young parents, struggling to find somewhere to spend the night safely in an overcrowded Bethlehem, were shown to a stable. We assume that the innkeeper's hospitality didn't stop at basic accommodation but extended to food and drink too. And thanks to that one simple, human and kind act shown to Mary and Joseph, the baby is born on the first Christmas in a box for animal feed. The incarnation is thus achieved in all its wild contradictions: holiness meets grubbiness; all-powerful meets vulnerability; and God meets humanity.

It is perhaps a sign of getting older and maybe wiser, but my ideas of what constitutes a present are rapidly changing. High monetary value, great intrinsic worth and lavish

spending do not always equate with what makes for a well appreciated gift. Some things like human kindness, carefulness and patient companionship can be presents that are beyond price, especially at a season that brings acute loneliness and isolation for many. This year, the necessary restrictions caused by the pandemic of Covid-19 will only add to the difficulties many face and 'hospitality' may well still be a 'no-no'. Even so, maybe this Christmas, we should re-think our Santa List and dispense more on a low-cost but high-value basis. And return to 'stable values.'

Baby Yoda and the Pooping Flamingo might have their day, but the gift of one small act of compassion can last an eternity.

Despite all our tribulations can I wish you all a happy and peaceful Christmas and a much kinder and safer year ahead.

Kirk News

One piece of positive news is to report that Joyce White was appointed Session Clerk at the last Kirk Session meeting which was conducted by Zoom. Joyce brings a wealth of teaching experience and school management to the job and we thank her and wish her well in this important role.

The ever-changing regulations regarding church services have proved to be a challenge, but despite many restrictions, physical services are now taking place again at Abernethy and Arngask. Sadly, our war-memorial services had to be cancelled on Remembrance Sunday and due to the inability to sing and the need to wear a face-mask whilst in church along with heavily restricted congregational numbers it will not be possible to hold any Carol, Christingle or Watch-night services this year.

On a more hopeful note, a mid-week afternoon service has been taking place every fortnight alternating between the two churches. A Zoom Café Church service has also been held fortnightly and in addition to this, Rev Stan has been sending out 'Virtual Church' services every Sunday. Current worship information can be accessed through the Church ADA (Abernethy & Dron & Arngask) Facebook page. Here you can find details about how to 'register' your 'Trace and Protect' details, get the weekly service sent to your computer and join in with Café Church by Zoom.

Indoor Play

*Light and warm with a lovely café
Supervised play available to allow
parents to relax, work or workout*



www.treehouseandgym.co.uk

@treehouseandgym

info@treehouseandgym.co.uk

*1st Floor Jamesfield,
Abernethy*



Gym



Studio

LES MILLS

2 BEDROOM APARTMENT TO LET IN PAPHOS CYPRUS



Lovely 2 bedroom garden apartment to rent.

About 3km from Paphos Harbour and only 900m from the sea.

Main bedroom has a big double bed, plenty of cupboard space, and a patio door leading to a small garden, with patio table, chairs, and parasol for you to dine "al fresco".

Second bedroom has 2 single beds, and, again, plenty of storage.

Fully furnished and very comfortable, with air-conditioning, excellent kitchen area (fridge freezer, washing machine, oven and hob etc)

The bathroom has WC, bath and "over-bath" shower.

Plenty of towels, bedding etc all in apartment, so no need to carry that extra luggage. 2 communal pools, plus a children's pool, set in lovely gardens, and close to bus route and local tavernas. Nearest taverna is less than a 5 minute walk away! Only 20 minute drive from Paphos airport and collection can be arranged.

Realistic rental rates, as I am only looking to cover ongoing bills and expenses.

For more information contact

Lawrence on 07836 578563, or e-mail lozzenge2@gmail.com



77th Perthshire (Glenfarg) Scouts

Nordman Spruce Christmas Trees Pre-order - home delivery



Support your local Scout group and pre-order your 2020 Christmas tree now – only £40.

High quality locally grown Nordman Spruce Christmas trees – 6 to 8 feet tall – delivered to your door, in line with the current COVID-19 guidelines.

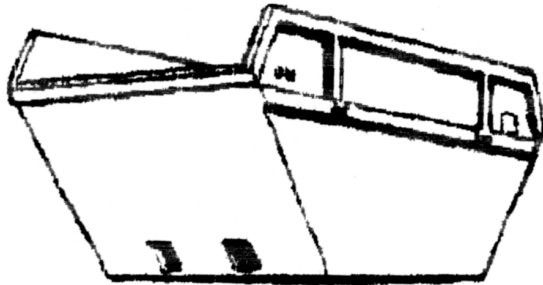
Pre-payment by bank transfer please - by 1st December.

To place your order contact Carol Harris on
07799582644/blindwells@gmail.com

Scottish Charity Reference Number – SC032642



Binn Skips



Binn Farm • Glenfarg • Perthshire
PH2 9PX

Tel. 01577 830 833
Fax. 01577 830 488

Glenfarg Community Centre News

Glenfarg Community Centre needs your support!

The pandemic has highlighted the importance of our community being able to meet together and socialise. We are all missing this aspect of village life and looking forward to when we can get together once again.

It is good to know that the Hall is once again open for community groups to use - albeit in a limited way with social distancing etc. We hope that our community groups will once again make use of the facilities that are available.

As you may know the Hall Committee has reorganised itself so that it is better able to bring on the exciting plans to create a Community Centre that will bring together the existing Hall and the adjoining Schoolhouse as one building offering a variety of space for community use. In addition to offering space, it is also planned to offer food during the day and to arrange groups for young people.

To do this we need your help. The Board of Trustees is responsible for running the Hall but there is also much that needs to be done to make the Community Centre plans a reality. If you have energy and enthusiasm to help your community – especially as it recovers from the Covid pandemic then please have a word with one of our Trustees. There are many different ways in which you could help - and one of us can give you more information about what we do and how you might be able to help. We need new ideas, enthusiasm and support so I hope you will step up and have a chat with one of us soon.

In particular, the Village Hall needs a Trustee to look after the buildings as Property Convenor. This important role involves making sure that any necessary repairs and maintenance are carried out and the buildings are properly looked after. If you are a handy person and would like to help out then please have a word with Cedric Wilkins on 07768661160 or email me at cedric.wilkins@gmail.com

Our AGM is on December 2nd (virtual) and more details are available on our website <https://www.glenfargcommunitycentre.com/>

Cedric Wilkins

Glenfarg Village Hall/Arngask Hall
Annual General Meeting arrangements
December 2nd 2020 19.30 (virtual by Zoom)

We have now received from our Independent Examiner the 2020 Annual Report and Accounts for the Hall, and are in a position to put these to our AGM for approval. The Accounts are available on the website at <https://www.glenfargcommunitycentre.com/>

I would like to thank both our Treasurer, Ross Blakie, and our Independent Examiner, David Johnston for the preparation of these Accounts.

Because of the reorganisation of the Village Hall Association into a Charitable Incorporated Organisation (or SCIO) there are two sets of Accounts. This means there will be two parts to the AGM – one following the other.

These will be on the same date of Wednesday December 2nd starting at 19.30 with the Village Hall Association AGM and followed by Arngask Hall (SCIO) AGM. In addition to the approval of the accounts, the Agenda will include a motion to wind up the Village Hall Association, This was approved in principle at the AGM held on November 26th 2019. The motion is available to view on the Glenfarg Community Centre website and also appears below. There will also be elections to the Board of Trustees of the SCIO, Arngask Hall.

Remember that the Village Hall membership includes anyone living in the community, whereas the Arngask Hall membership includes only those who have signed up as members. If you wish to join Arngask Hall as a member the application form is available on the Community Centre website. I would encourage you to do this in advance of the meeting – there is no cost involved. However, if you are not a member of the SCIO you will only be able to vote on the matters relating to Glenfarg Village Hall Association.

Because of the current restrictions on meetings, the AGM will be held virtually by Zoom invitation. The invitation will be sent to all Arngask Hall members who have provided an email address. Anyone else wishing and eligible to attend, and not receiving an email invitation, should email me in advance of the meeting so that I can reply with an invitation. My address is below. My email invitation will have a link highlighted in blue that you need to click on and open the meeting connection to be admitted to the meeting.

The Agenda for the AGM is on page 43. I hope you will be able to attend this meeting and if you have any questions please contact me.
Cedric Wilkins, Chairperson cedricwilkins@gmail.com M07768661160

Glenfarg Tennis Club



We have recently managed to replace Chris as our club coach. In these difficult times, again adversity seems to have been lenient. Chris was a great coach, well loved by all the juniors at the club. We were ambivalent about him finding a new position, teaching kids with difficulties, but we're delighted he has found a position which suits him to a tee and there is no doubt that our loss has been a deserved gain for the children he will teach. Good luck Chris.

Then, just as our search for a new coach appeared fruitless, up popped Norman McGlinchy. From nowhere! Well, Dunfermline. Norman is a great Grade 5 coach who knows the ropes. He has nearly 30 children eating out of his hand every Tuesday, and has even impressed the 'Old Faithful' into seeking his guidance.

The courts continued to give us grief! They hold water better than any sponge and make normal tennis impossible. Also with balls heavy with water, there is an increased risk of injury. So, after weeks of meetings and visits to other clubs, we bit the bullet and lifted the carpet on court 1. What a job! Luckily, we had a veritable army of helpers, all old guffers except for Hamish, Elliot and Robbie who did the bulk of the work. Really, I'd forgotten what strength youth has. Without those three, we'd still be doing the job now!

So we split the carpet into 50 pieces. What next? One person couldn't move... I mean Move! Not lift. Move a single piece. So another stalwart on the short list of Glenfarg Tennis Club worthies, Billy Allison came to our rescue with a fork lift truck and a flatbed lorry. The job took most of a day, but Billy and his men did a magnificent job. It was a full load for one of those massively long, flat lorries. Thanks again to Billy. What do you give to a man who's already got life membership??



Now, I apologise sincerely and deeply to anyone, especially the dog walkers who have been inconvenienced by the mess that our work on the tennis courts made of the ground immediately adjacent to the courts at the number 3 end. Initially we had thought with the tennis court carpet under the caterpillar tracks, we could limit the damage, but it just made it worse.

We have taken remedial steps to right the damage and have put the kerbing back better than it was before. But once again, I am really sorry for all the inconvenience and muddy boots it caused.

It has meant, though, that we could get the court marked out on the tarmac underneath. The new surface plays true and without getting the balls wet- an absolute luxury! We are playing regularly, even in November and it has enabled us to finally play some of our internal championship. So far, we have two results. Mervyn and Ann won the Mixed doubles against Maud and John. Then on the new black court, Alex won his first Glenfarg Men's singles title against Mervyn. Thank you Pfizer and BioNtech for letting us plan the celebration. They'll be dancing in the streets of Hillton of Duncrievie!

Tim Corcoran



Glenfarg Folk Club

“The show must go on”



www.glenfargfolkclub.com

The club still meets every Monday evening with 25 to 30 people in the audience, be it Zoom or Facebook Live. Like most groups or individuals, we are now very familiar with ‘meeting’ electronically. In the music world audio quality is the key, so our guest artistes prefer to stream via Facebook Live. For club Sing-arounds we use Zoom.

We are certainly not a closed shop, absolutely anybody is welcome to join us. Best of all there is no charge, although Club Members pay a subscription of £20 per annum. Feel free to contact the club via the website address above and we will give you full details of what, when and how. You will be made most welcome.

Each month there is a guest artiste from somewhere around the world, a Gathering Concert with four performers and two Sing-arounds. Something for everyone.

On the negative side our plans to hold our annual Folk Feast at Backstage, Kinross in April 2021 have been scuppered for another year. Instead it will be a virtual event as it was this year. It was extremely successful so we will build on that.

The full live artiste concerts from recent months, two forty-minute sets per artiste, are all available to view on our website. Edwina Hayes, Paul Walker & Karen Pfeiffer and Winter Wilson will amaze you with their musicianship and performing talents. To find these go to the website address above.

Philip Ponton, Club Secretary and Website Editor.



FERRIER & MACKINNON

OPTOMETRISTS


We've been proudly delivering excellence in eyecare to the local communities of **Glenfarg, Milnathort, Kinross** and for over 25 years.

Book your **FREE NHS** eye test with your trusted, local optician

www.fmoptom.com

74 High Street KINROSS 01577 864009	27/29 Chalmers Street DUNFERMLINE 01383 721502
---	--

Practices also in **COWDENBEATH, BURNTISLAND, INVERKEITHING, NEWPORT-ON-TAY** and **LOCHEE**

Find us on 

OPEN SAFELY!



22 King
Edward St,
Perth
PH1 5UT

We've had a Makeover Pop in when you're in Town!

20% Discount Monday - Friday for Glenfarg Newsletter Readers

Glenfarg Improvement Team (GITS)

As I said in the last issue of the Newsletter this has been a strange time for the GITS as we undertake wee jobs around our village, with social distancing and restrictions on how many and where we can gather, some things are on the back burner. However that hasn't stopped us finding a couple of small projects to keep us out of mischief. A project which will be best appreciated next Spring and Summer was the creation of a wild flower meadow behind the hanging basket posts at Main Street's North end. This piece of land is owned by P&KC and GDIB have been allowed to maintain/develop this area. For us oldies who can remember back to what this area was, putting it politely a dumping ground, any





maintenance was an improvement. The ground there is of exceedingly poor quality and is extremely uneven which has made the task of just strimming it real hard going. GIT Eric drafted a proposal to GDIB to create a wildflower meadow and his proposal was immediately accepted.

Under Eric's guidance the gang set about clearing the area's top thatch and despite years of trying to control this area we still uncovered some "interesting" dumped items.

continued overleaf





The weather was relatively kind to us so it's fingers crossed for a stunning display next year. Oh, and hopefully the wildlife will appreciate it too!

Another wee job we managed to complete was the planting of some additional bulbs along the South verge and again fingers crossed for a great show in the Spring. And always remember that if you're a GIT everything stops for tea (and cake).

See how to create a wildflower meadow in the GDIB piece on page 38.





HALLOWEEN



With all the Covid restrictions in place, it was looking like Halloween would be cancelled this year. But up stepped Alison and Debs, who were determined that the kids would get their treats.

With the help of volunteers, a Scavenger Hunt was quickly organised. Little ones were encouraged to go for a wander with a big person around the streets of central Glenfarg to solve the clues on the Halloween sheet.

Ten villagers put a poster in their window to match the clues on the sheet, and when they had all been found, the Halloween sheet could be returned to the Village Hall to claim a spooky treat.

But more than this, other residents joined in with the spirit (Whoo . . .) of the occasion.





There were ghosts in the trees, pumpkins on the doorsteps, spooky tombstones and even a display in the back of a car.

Everyone had a socially distanced great time.

Alison and Debs would like to thank everyone who helped make this event a big success.

Now - how about lighting up our windows and front gardens in December to celebrate Christmas?



GLENFARG COMMUNITY CINEMA



Those were the days! A hall full of happy people settling down to watch a film together. Unfortunately, with the present Covid restrictions, the cinema committee didn't feel happy about inviting a reduced number of people to social distance in a hall that would need extra ventilation. And under those conditions, we wouldn't even be able to cover our costs.

We were aware, however, that the dark nights could make people feel even more isolated. And so the idea of the 'virtual cinema' was born. Why not plan an evening when we would all watch the same film on Netflix in the comfort of our own homes - with drinks and nibbles by our side. We could have the usual introduction done via Zoom, and all meet up again on Zoom after the film to have a chat about it.

First of all, we tried it out amongst ourselves. It worked! So in November we invited others to join us by putting an advert on our Facebook page and emailing our contacts.

Here are our reviews of the films we have watched so far, and details of the one we will be watching in December. If you would like to join us, email janet_watson@mac.com and you will receive an invitation to Zoom.

The Peanut Butter Falcon: We were first attracted by the strange title, but this film turned out to be an all-round winner. A feel good comedy drama, it was a directorial debut for its two writers and went on to become a 'sleeper hit' - the highest grossing independent film of 2019.

In a Huckleberry Finn storyline, Dakota Johnson and Shia LaBeouf set out to help a young man with Down Syndrome (Zack Gottsagen) fulfil his dream of meeting his hero and taking part in a professional wrestling match. We all voted it a Very Good film.



Marriage Story: This was our choice of film to watch in November. Written and directed by Noah Baumbach, married couple Nicole (Scarlette Johansson) and Charlie (Adam Driver) have agreed on an amicable split - and then the lawyers get involved.

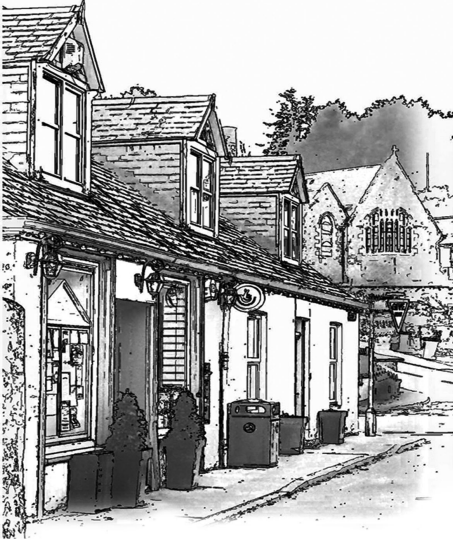
Our response to this film was mixed. Most felt it was slow to get going but agreed that the acting was brilliant, especially in the highly charged confrontation scene. Our comments ranged from *'It wasn't for me - I started reading my book'* to *'I thought it was fantastic'*. So I would encourage you to try it and decide for yourself.

Friday 11th DECEMBER - October Sky

The true story of a coal miner's son who was inspired by the first Sputnik launch to take up rocketry against his father's wishes. This film won the Critics Choice Award for Best Family Film.

We have watched several biographical films and it's always interesting at the end to find out what happened to the real characters from the film.





Glenfarg Village Store

Here for more than the occasional
snow storm or the odd pandemic!

Opening Hours

Mon. to Fri. 8am to 7pm

Sat. 9am to 5pm

Sun. 9am to 3pm

glenfargshop@gmail.com 01577 830823

JOHN ANDERSON

FISH
MERCHANT



**In Glenfarg and Duncreevie
Every Wednesday Morning**

On the van

Haddock, Smoked haddock, Salmon, Smoked salmon, Mackerel, Kippers, Rainbow trout, Seabass, Cod, Hake, Lemon sole, Pickled herring, Eggs, Artisan breads, Seasonal fruit & vegetables. Lobster & Crab pre-order.

New Cub Scout Leader

My name is Michael Mchardy and I am the new cub leader for the Glenfarg cubs 77th Perthshire. We are currently holding meetings at the Glenfarg Village hall on every second Monday @ 6pm to 730pm.

A bit about me: I grew up in the village and attended beavers, cubs, scouts and explorer scouts, I learned lots of life skills from camping, cooking on open fires and how to safely use axes



and saws to name but a few things. After that, I headed out into the world of work and a year of travelling in Australia. I joined back up with the scouting movement briefly in Brechin and Inverurie, but work always seemed to get in the way, and I had to give it up until I could have a better work/life balance.

I managed to achieve this when I joined the 1st Aberdeen cubs and started my leader training with help from parent helpers who turned into leaders, and the management team in the 1st Aberdeen district. Earlier

this year I moved back to the area and have joined up with Glenfarg cubs again and with Robert Morton who was my Scout leader when I attended scouts.

My vision for the cubs in Glenfarg in the coming terms is to work on some of the badges that we can achieve in cubs. We have already completed the Astronomers badge and are working on the navigation badge as I write this. As with most things at the moment, we are obstructed by the coronavirus and we are following all of our risk assessment items to make sure we are as safe as possible. This means that we try to have as much outdoor stuff as we



can and we are socially distanced from the kids at all times. We are not able to do any camping with the cubs at the moment but we will hopefully get back to it next year if all goes well. Camping with the cubs is a great opportunity to earn badges and work towards the chief scout silver award which is the highest badge achievable in cubs.

Michael McHardy

It gives me great pleasure to welcome Mike as Cub Leader to the scouting family in Glenfarg, particularly as he is “one of ours”. He has learned a lot in his time away from the village, and I anticipate that the cubs, and the group as a whole, will benefit greatly from that experience.

Robert Morton, Group Scout Leader

Jan Macpherson

The sad passing of Jan Macpherson in August brought untold grief to Bill, Helen, Anna, Will and their extended family and friends. Nothing prepares one for this situation but it got villagers talking about Jan and her contributions to this village where she and Bill made their home. If all the tales about Jan were to be put down in print the Editor would need to publish a 20 page supplement.

However there was a common thread that ran through the tales, that thread was of a kind woman, an industrious woman, an organiser and a fun loving woman but most of all a family loving woman.



Interestingly as you read this Newsletter you may have to say thank you to Jan as she was one of the founders of this regular village publication and, back in the '70s, I'm sure her neighbours in Birch Lane would have heard the clanking of the "printing press" emanating from the Macpherson household, In later years, the garden bench presented to her on her retiral from the Newsletter, became Jan's favourite lunchtime spot, weather permitting of course. Again back in the '70s Jan was instrumental in setting up the Baby Sitting Circle operated on a points system and, although Jan's socialising and committees often saw her in the red, no-one minded babysitting for the Macphersons as there was always lovely home baking for your supper.

Jan's contribution to the community continued as Chairman of the Playgroup and Secretary of the Village Fete committee and it was she who restarted the Guide Company in Glenfarg. Although Jan was always involved with something, she still found time to lend a hand as and when required, be it giving someone a lift to a hospital appointment or helping set up at a fundraising event. And of course no-one forgets all the good times, the fun and laughter times and the silly times - the dinner parties, the fancy dress parties and the Wine Club shenanigans. Even during our restricted summer activities Jan raised a smile when, at a small socially distanced garden get together, she noticed that the hostess's husband had included a small bottle of Avon air freshener among the bottles of hand sanitiser.

Rest in peace Jan - we all miss you.

Ivor Gordon

Ivor and Dorothy Gordon are very reluctantly moving away from Hayfield Road to live in Livingston close by their family. We have been here for thirty happy years and bid farewell to our friends in the village, in the church and to our wonderful neighbours. God bless you all.

Sent from Ivor

Sadly, Ivor died suddenly on the morning of 16th November in his new house in Livingston. Ivor and Dorothy had lived in Glenfarg for some 30 years and were both active in the church. They were also good supporters of the Community Cinema and Ivor was a very keen angler. Our thoughts at this time are with Dorothy and the family.

Alex Johnston

Farming In Lockdown

Where has this year gone? I still remember sitting in the lambing sheds back in March as the country went into the first lockdown, never imagining we would still be in a similar position on the run up to Christmas.

Although we are what seems like a long way off our 2021 lambing, it's what's at the forefront of our minds just now. A lot of farming is about planning for the future and right now we are planning for lambing by putting our tups (male sheep) out to the fields.



The tups will be out working from October through to December with each individual tup getting a group of about 50 ewes for a six week period. We put the tups out to their groups of ewes at different times, this allows us to manage the ewes better at lambing time, bringing them in to the sheds in groups of 100 as they are ready to lamb.

Our autumn calving cows are all now inside and have now nearly

finished calving, there's just two left who don't seem to be in any rush at all! This group of 105 cows have been calving since mid August and hopefully will be finished by next week (fingers crossed).



After a summer out at grass the top 60% of last years autumn calves have now been sold to other farmers to grow on for about the next 6 months before they are ready for the supermarket shelves.

Our other group of 45 cows, the spring calvers, had a visit from a specialist cattle pregnancy scanner. This allows us to see what cows are pregnant and carrying a single calf or twins and also if any of the cows haven't held to the bull. Any of the cows that aren't pregnant get sold and the others will be fed according to the number of calves they are carrying. This allows us to be more economical and less wasteful with feeding.

We have also recently weaned the spring calves off their mothers and they have come inside for the winter to be fed before being sold

in the spring. The cows will remain outside until the weather gets too hard. Anyone walking round the Arngask loop will spot these girls before they heads inside for the winter.



The silage we harvested back in July and September has now had time to sit and ferment/pickle and is ready to be fed to our cows. We analyse our silage to allow us to see how much goodness and energy is in this feeding so we can draw up the correct diets for the different groups of cattle we are feeding. Our best silage goes to our recently weaned calves and freshly calved cows with the poorer quality silage going out to the spring calvers. The spring calvers are currently only being fed straw and we avoid giving them the best quality silage to prevent them getting too fat which then leads to problems at calving time.

This year seems like an easy one to write off, however I feel this year has, when we stop and think about it, provided a lot of

positives. The majority of us will have stopped for a moment and appreciated what's around us a little bit more, our families and friends, the small green space that is your garden or the greater countryside you have been able to explore, a greater sense of community that has been created not just locally but nation wide and especially a greater appreciation for our key workers who now battle the second wave of this virus hitting the country.

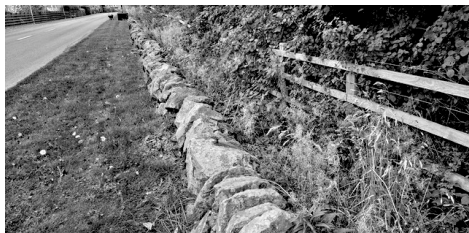


Moo the festive pet calf with her best friend Harris

I wish you all a very safe and Merry Christmas when it comes and will hopefully see lots more of you enjoying walks round the Arngask loop on what, at the moment, seems like the very rare dry days. I have had some lovely mornings spent chatting to locals (socially distanced of course) about life on the farm and what's going on in the fields while I'm out riding my horses and I look forward to many more.

Emma Cheape

GLENFARG AND DUNCRIEVIE IN BLOOM



Before



After

Summer and Autumn 2020 has been and gone and while some aspects of these different times are best forgotten, there are so many positives emanating from the community of Glenfarg and the work of GDIB is certainly included in that number. Early in the year we knew that things would be different this year but thanks to the amazing planter adoption volunteers we still had that splash of colour to brighten up any dull day. The success of the planter adoption scheme was so great that we hope the volunteers will step up again in 2021 and this time GDIB will hopefully be able to supply them with plants and do the watering for them. If either of these obstacles made it difficult for you to volunteer this year maybe you'd like to volunteer next year. Contact Irene on 830441 or Kate 830343.

GDIB with support of the GITs have created a wildflower meadow at the north end of the village and you can read all about that in Eric's article on the next page. There's also been a lot more bulb planting along the south verge and the Glenfarg Green has also had some major tidy up work undertaken. The area around the new planter on south verge has taken shape, the area behind the wall given a much needed haircut and the 2 new beds in Ash Grove will be magnificent as they become established. All of these tasks have been difficult due to current restrictions but thanks to the respectful behaviour of our volunteers we have been able to continue safely.

Our fundraising events were cancelled this year but sadly our expenses, e.g. insurance, fuel and maintenance, were not. Times are hard for many people right now so it would be wrong for us to come round with the begging bowl. However here's something you can do at no cost to you, register with easyfundraising and choose Glenfarg & Duncrievie in bloom as your preferred cause. As you do your online shopping you could be helping GDIB to continue their work in this community. Several people have already signed up and the donations are already coming in. I've also registered and I couldn't believe how easy it was and if you set up the donation reminder link you'll never miss an opportunity to donate. The link is on the Glenfarg Grapevine but you can just log in to-

www.easyfundraising.org.uk

gROWING WILD IN eLENFAre

It's a good time of the year for planting a patch of wildflowers. By next summer you will have a splash of colour and the inner glow of knowing you've helped maintain local biodiversity. The GITs are converting a strip of land at the north end of the village into a wildflower area. Not so much for the inner glow. More for the tea and biscuits and the chance of a socially distanced blether.

If you have an area of grass to plant into, it's best to strip off the grass and remove some of the top soil. Hire a turf cutter for large areas or just use a spade for small mini-meadows. Enjoy the feeling that you have now finished the hard work.

For the GITs, life wasn't that easy. The strip of land at the north end of the village was full of lumps and bumps with stones sticking out through the grass. It took two trimmers and a lot of vigorous raking to expose enough soil for planting. Next select a suitable wildflower seed mix. Scotia Seeds sell a Bee, Bird and Butterfly mix which the GITs spread along with a woodland meadow mix below the trees. Try adding dry fine sand to the seed to make spreading easier. Breaking large areas down into smaller blocks helps for even dispersal. But you don't have to be too exact. In the end, the flowers will grow where they want to grow.

Finally, add the secret weapon, Yellow Rattle. This plant is parasitic on grass and will reduce its vigour, leaving open patches for wildflowers to colonise. Yellow Rattle seed is expensive so it is important that every seed is in contact with soil. In a meadow, cattle graze the aftermath, their hooves breaking through the turf exposing soil where seed can germinate. The GITs don't have a cow. So they improvised by lifting hoof sized clods with a mattock.

Next autumn, when the wildflowers have shed their seed, cut the grass back and remove the cuttings. Keep the area nutrient poor. In a wildflower meadow the grass would be cut and baled with cattle finishing off the residue. However stick to cutting and composting as your neighbours might not appreciate a four legged friend.

Eric Hayward



**A Glenfarg based dog exercise service offering dog walking
and for more energetic dogs, jogging and biking sessions**

call Yvonne on 07585 060 663 or email info@tailsandtrailsglenfarg.com
visit us at www.tailsandtrailsglenfarg.com or find us on Facebook & Instagram

POOCH PERFECT DOG GROOMING SALON

**Professional dog grooming service
with over 6 year's experience**

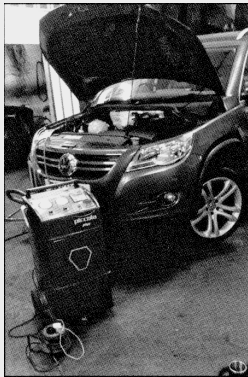
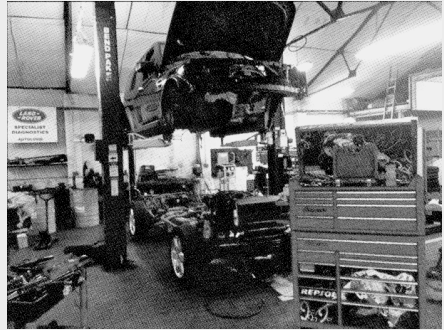
**The Gables, Main Street
Glenfarg PH2 9NT**

**01577 830741
poochperfect741@gmail.com**



Glenfarg Garage

**Advanced Diagnostics
Servicing & MOTs
Tyres & Wheel Alignments
4 x 4 Specialist**



**All Vehicle Repairs
undertaken including
Air Conditioning
Servicing & Repairs**



**Email office@glenfarg-garage.co.uk
Tel: 01577 830633
Main Street, Glenfarg, PH2 9NU**



VETERINARY SURGEONS

CAMERON & GREIG MRCVS

'Ardmhor', Stirling Road, Milnathort KY13 9XR



By appointment only



Monday - Friday	9 - 10.00am 2 - 3.00pm 6 - 7.00pm
Saturday	9 - 10.00am



Telephone: Kinross 863 494
Website: www.cameronandgreigvets.co.uk

*Large and small animals
24-hr emergency service*

Silver Lining Hair Studio

Ladies, Gentlemen, Children, Students, Seniors

Bridal Hair a Speciality

Kebelo ADVANCE Specialist

Upstairs at Jamesfield Centre, (Lift available)

Perth Road, Abernethy, KY14 6EW

Telephone: 01738 851110

(Walk In Customers Welcome)

**Send a message via Via Facebook or Instagram – typically replies
within an hour**

www.silverlininghairstudio.uk

**Notice of Annual General Meeting
Glenfarg Village Hall SC 027474 and
Arngask Hall SC 048505 (SCIO)
Wednesday December 2nd 2020
at 7.30 p.m
Virtual by Zoom
Agenda**

Present

Apologies

Minutes of AGM Glenfarg Village Hall November 26th 2019

Minutes of AGM Arngask Hall November 26th 2019

Minutes of AGM December 18th 2019 (adjourned)

Trustees Report and Annual Accounts SC 027474 for approval

Trustees Report and Annual Accounts SC 048505 (SCIO) for approval

Motion to wind up Glenfarg Village Hall Association

Election of Trustees to Board of SC 48505

Any Other Business

Date of Next Meeting

Motion to Wind Up Glenfarg Village Hall Association

Following the Approval of the Final Report and Accounts at the Annual General Meeting of Glenfarg Village Hall Association on December 2nd 2020, it is proposed to wind up the Association

Proposed: Cedric Wilkins (Chairperson), Seconded Ross Blaikie (Treasurer)

ANDREW MILLER FIREPLACES



***GLASS / GRANITE / SLATE / TILED HEARTHES TO SUIT
STOVES or FIRE SURROUNDS
GAS / ELECTRIC / FIRES / SUITES***

***LARGE SELECTION OF VARIOUS TIMBER and PAINT FINISH
FIRE SURROUNDS / BEAMS and SHELVES***

***SHOWROOM by APPOINTMENT
27-29 WESTERLOAN
MILNATHORT
KY13 9YH***

and now at
***THE CONSERVATORY JAMESFIELD FARMSHOP & KITCHEN
ABERNETHY***

Any queries do not hesitate to contact
***Email: millerfireplaces@btconnect.com
Tel 01577 862173
Mobile 07870 284868***

**GLENFARG COMMUNITY COUNCIL - MINUTES OF ANNUAL GENERAL
MEETING**

**Monday 2nd November 2020 7:00pm
virtual meeting via ZOOM**

PRESENT: CCllr Ponton, CCllr Pilmer, CCllr Horsman, CCllr Duncan, CCllr Fraser
Minutes Secretary G.Christie. PKC Cllr Purves, PKC Cllr Robertson

APOLOGIES: CCllr Warder

1. WELCOME AND INTRODUCTION:

GCC Chair CCllr Ponton welcomed everyone present to the meeting and explained what the format of the meeting would be.

2. ADDRESS FROM THE CHAIR COVERING PERIOD 2019-2020

CCllr Ponton then presented an overview of the Village and its resident's commitment to the support of all within the village due to the current Covid-19 virus. Special mention was given to the Village Shop owners for their public and shop's support for us all. It was noted that they carry out an important role within or village and that we must continue to support them. Cllr Ponton spoke about the expansion of housing within the village boundary and that it was an ever expanding community with wonderful facilities, School and Village Hall.

CCllr Ponton thanked her team of CCllrs for their work throughout the year and extended this thank you to the PKC Cllrs: C.Purves, W.Robertson, R.Watters and M.Barnacle for their valued support and professionalism.

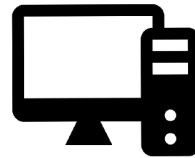
3. ANNUAL FINANCIAL STATEMENT:

Treasurer CCllr Horsman gave a detailed statement of the financial accounting period 2019 to 2020 for the GCC as follows:

Q W E R T Y I T SERVICES

Your Local

COMPUTER EXPERTS



ABOUT US

We are a local IT support company based in Oakbank, Perth. We have been providing computer support services to home users and small businesses for over 15 years.

We pride ourselves on offering the best service to all of our customers at an affordable price and we always go the extra mile to make sure all of our clients return to us time and time again.

David Silvester, owner

Get in touch

8 Mountview Road, Perth, PH1 1LD
info@qwertyitservices.co.uk
www.qwertyitservices.co.uk

OUR SERVICES

- ✔ Windows 10 Upgrades
- ✔ Virus Removal
- ✔ PC and Laptop servicing
- ✔ New Computer Setup
- ✔ Troubleshooting
- ✔ Upgrades and Advice
- ✔ Security Checkups

01738 479 564

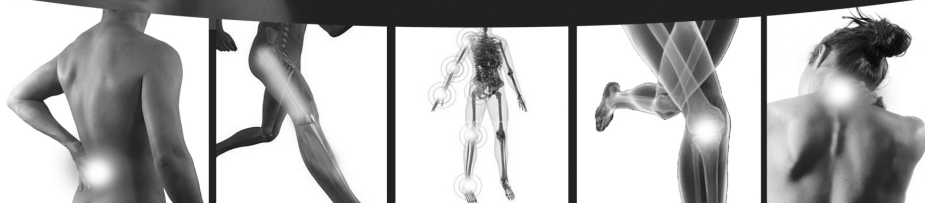
GLENFARG COMMUNITY COUNCIL - GLENFARG NEWSLETTER
STATEMENT OF INCOME AND EXPENDITURE
FOR YEAR ENDED 31 AUGUST 2020

	1st Apr 2019/2020	2018/2019	2017/2018						
Glenfarg Newsletter									
Income	£	£	£						
Newsletter advertising, donations & subscriptions	1,896	1,632	1,751						
Total income	1,896	1,632	1,751						
Expenditure									
Newsletter expenses	959	994	1,165						
Newsletter competition prizes	-	-	120						
Village hall expense paid in error but corrected in income	-	-	12						
Editor expenses (stationary and travel)	-	82	18						
Defib maintenance and training	-	36	195						
Purchase of BT phonebox	-	-	1						
Donation - Santa Suit	20	-	-						
Contribution to annual cost of Christmas Lights	374	312	286						
Covid Village Supplies	297	-	-						
LITE Christmas Lights purchase	2,293	-	-						
Shop Security Expenses	370	-	-						
Glenfeargach Webhosting	84	-	-						
Total expenditure	4,397	1,424	1,797						
Surplus/(deficit) for year	(2,501)	208	(46)						
Surplus b/fwd	7,696	7,488	7,534						
Surplus c/fwd	5,195	7,696	7,488						
Glenfarg Nursing Association Fund									
Income	-	-	-						
Expenditure	-	-	-						
Surplus/(deficit) for year	-	-	-						
Surplus b/fwd	4,011	4,011	4,011						
Surplus c/fwd	4,011	4,011	4,011						
Lochelbank Community Benefit Micro-grants									
Income									
Foundation Scotland	1,191	1,162	1,000						
Expenditure									
Grants awarded (see below)	293	776	1,264						
Surplus/(deficit) for year	898	386	(264)						
Surplus b/fwd	697	311	675						
Surplus c/fwd	1,595	697	311						
Arrgask School Fund									
Annual payment	100	100	100						
(Deficit) for year	(100)	(100)	(100)						
Surplus b/fwd	241	341	441						
Surplus c/fwd	141	241	341						
Represented by:									
Bank accounts	2020	Receipts	Payments	2019	Receipts	Payments	2018	Receipts	Payments
	£	£	£	£	£	£	£	£	£
Newsletter Current account	10,801	3,087	4,690	12,404	2,794	2,200	11,809	2,751	3,061
Arrgask School Fund Current account	141	0	100	241	0	100	341	0	100
	10,942	3,087	4,790	12,645	2,794	2,300	12,150	2,751	3,161
Certified that the above accounts have been presented for examination and found correct with vouchers exhibited at 31 August 2020.									
Treasurer: Daniel Horsman	Date Prepared: 1st October 2020								
Chairperson: Margaret Ponton									
Examiner: Jean Andrew	Date signed as correct:								
Examiner's Designation: C.A.									
Examiner's Address: Strathaven, Duncruevie									
ASSETS	2020	2019	2018						
Public Access Defibrillator	600	750	900						
Christmas Lights	3,536	4,420	5,303						
Christmas Lights (2020)	2,293	-	-						
	6,429	5,170	6,203						
Note: The PAD and Christmas Lights are over 10 years.									
MICRO-GRANT SUMMARY									
Glenfarg Community Company		168							
Friends of Wallace Park		108							
GDIB		250	500						
Glenfarg SWI		250							
Duck Project			250						
Pond Life Saving Equipment			124						
Kinross Volunteer Group			140						
Glenfarg Brownies			250						
GIFS phonebox restoration	239								
E Hayward Orchard Project	54								
	293.00	776.00	1,264.00						

KINROSS Physiotherapy



- **SPRAINS/STRAINS/TEARS**
- **LOWBACK/NECK PAIN**
- **HIP/KNEE/ARM PAIN**
- **GOLFER/TENNIS ELBOW**
- **TENDON INJURIES**
- **ARTHRITIS**
- **TMJ (JAW PAIN)**
- **POST FRACTURE OR DISLOCATION**
- **REHABILITATION FOLLOWING SURGERY**



OPENING TIMES

**MON - FRI
10am - 9pm**

**37 New Road, Milnathort
Kinross KY13 9XT**

**01577 864875
07912 100 845**

enquiries@kinrossphysiotherapy.co.uk

GLENFARG COMMUNITY COUNCIL										
STATEMENT OF INCOME AND EXPENDITURE										
FOR YEAR ENDED 31 Aug 2020										
	1st Apr 2019-2020			2018/2019			2017/2018			
P&KC Admin Grant										
Income	£			£			£			
Balance b/f	430			388			413			
Administrative Grant	270			312			287			
	700			700			700			
Expenditure										
Accommodation Costs	66			72			64			
Secretary stationary expenses	-			-			-			
Poppy wreath	35			34			33			
Examiner Fee	25			25			25			
GCC website/domain name	-			84			148			
Travel Expenses	-			-			15			
CC Stationary	110			55			27			
	236			270			312			
Surplus/Deficit to date	464			430			388			
Represented by:										
Bank accounts	2020		Receipts	Payments	2019		Receipts	Payments	2018	
	£	£	£	£	£	£	£	£	£	£
GCC Current account	464	270		236	430	312	270	388	287	312
Certified that the above accounts have been presented for examination and found correct with vouchers exhibited at 31 August 2020.										
Treasurer: Daniel Horsman	Date Prepared: 1st Oct 2020									
Chairperson: Margaret Ponton										
Examiner: Jean Andrew	Date signed as correct:									
Examiner's Designation: C.A.										
Examiner's Address: Strathaven, Duncrieve										

4. ANNUAL PLANNING STATEMENT

Cllr Duncan presented an overview of the Planning period from 2019 to 2020 as follows:

Planning AGM Report 2019 - 2020

This planning report covers the time period from 1st May 2019 to 31st October 2020. In that time there have been 14 planning applications made within the Glenfarg CC area. They are listed below in a chronological order with links. The list also includes 4 applications relating to the Binn Eco Park which lies within Abernethy CC area, but which has an impact on Glenfarg.

The most noteworthy applications includes the consented application for the expansion to the village hall, the consented application for the Binn wind turbines, and the two ongoing applications for housing developments of 6 and 7 houses respectively, in Duncrieve and on Main Street.

Glenfarg CC commented on the Duncrieve development and this led to useful discussions with PKC regarding the local development plan.

Change of use and alterations to agricultural steading to form extension to dwellinghouse (revised design)

Site Adjacent Of Easter Deuglie Glenfarg



**GILLIAN FORBES
STONECARVER**

**BESPOKE
HANDCARVED MEMORIALS
AND LETTERCUTTING**

www.forbesstonecarver.com
email:gilliancforbes@hotmail.com

01577 830754

AUSTIN HEATING & ELECTRICAL

Boiler Servicing and Repairs - OIL, GAS, LPG & ELECTRIC

Aga / Rayburn Servicing & Repairs (Rayburn Guild Engineer)



**Registered
Business**



**Call - 07786 705261 or 01577 861188
No Call-Out Charge**

www.austinheat.co.uk

Ref. No: 19/00709/FLL | Received: Wed 01 May 2019 | Validated: Tue 07 May 2019 |
Status: Decided

Change of use, alterations and extension to steading to form a holiday accommodation unit

Steading 50 Metres South West Of Wood Side Glenfarg

Ref. No: 19/00748/FLL | Received: Tue 07 May 2019 | Validated: Tue 07 May 2019 |
Status: Decided

Erection of a dwellinghouse and garage

Land 400 Metres North West Of Blairstruie Lodge Glenfarg

Ref. No: 19/00768/FLL | Received: Fri 10 May 2019 | Validated: Fri 17 May 2019 |
Status: Decided

Alterations and extension to dwellinghouse

Cuil Gorm Duncrive Road Glenfarg Perth PH2 9PA

Ref. No: 19/00779/FLL | Received: Tue 14 May 2019 | Validated: Tue 21 May 2019 |
Status: Decided

Alterations and extension to dwellinghouse

Flowerdene Greenbank Road Glenfarg Perth PH2 9NW

Ref. No: 19/00799/FLL | Received: Thu 16 May 2019 | Validated: Thu 16 May 2019 |
Status: Decided

Erection of a dwellinghouse (existing)

Strawearn House Glenfarg Perth PH2 9QL

Ref. No: 19/00889/LAW | Received: Wed 29 May 2019 | Validated: Wed 05 Jun 2019 |
Status: Decided

Extension to dwellinghouse

2 Ash Grove Glenfarg Perth PH2 9PH

Ref. No: 19/01153/FLL | Received: Thu 11 Jul 2019 | Validated: Mon 29 Jul 2019 |
Status: Decided

Change of use of dwellinghouse to form extension to village hall (Class 10) and ancillary restaurant (Class 3)

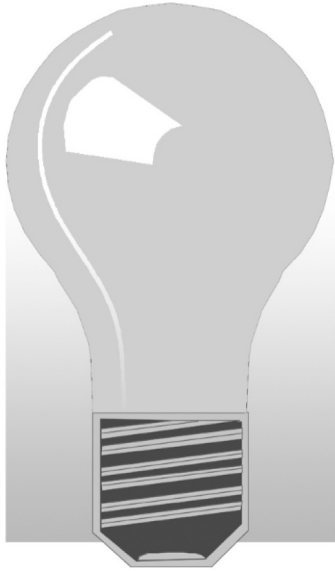
The School House Greenbank Road Glenfarg Perth PH2 9NW

Ref. No: 19/01573/FLL | Received: Thu 19 Sep 2019 | Validated: Thu 19 Sep 2019 |
Status: Decided

Alterations and extension to dwellinghouse

1 East Blair Cottages Glenfarg Perth PH2 9QL

Ref. No: 19/01956/FLL | Received: Tue 26 Nov 2019 | Validated: Tue 26 Nov 2019 |
Status: Decided



John Allison

(electrician)

*'Ardblair', East Blair,
Glenfarg, Perth PH2 9QL*

Tel: 01577 830 678

Mobile: 07717 791 484

Email: johnwallison@btinternet.com

All types of electrical work undertaken

Also:

Oil and gas central heating faults ~ Telephones
Computer network cabling ~ TV aerials and
distribution ~ Satellite re-alignment, alterations and
distribution ~ Wall mounted TVs installed

FREE ESTIMATES/ADVICE

Erection of a dwellinghouse (in principle)

Land 70 Metres South East Of Deuglie Croft Glenfarg

Ref. No: 20/00216/IPL | Received: Thu 13 Feb 2020 | Validated: Tue 18 Feb 2020 |

Status: Decided

Erection of 6 dwellinghouses, garages and associated works

Land 40 Metres North Of Woodbine Cottage Duncricvie Glenfarg

Ref. No: 20/00308/FLL | Received: Fri 28 Feb 2020 | Validated: Wed 04 Mar 2020 |

Status: **Awaiting decision**

Erection of a substation and associated works (in retrospect)

Binn Eco Park Wind Farm Glenfarg

Ref. No: 20/00423/FLL | Received: Tue 17 Mar 2020 | Validated: Thu 23 Apr 2020 |

Status: Decided

Erection of a wind turbine and associated works (in retrospect)

Binn Eco Park Wind Farm Glenfarg

Ref. No: 20/00430/FLL | Received: Wed 18 Mar 2020 | Validated: Thu 23 Apr 2020 |

Status: Decided

Erection of a energy waste facility and associated works

Binn Farm Glenfarg

Ref. No: 20/00004/PAN | Received: Thu 19 Mar 2020 | Validated: Wed 01 Apr 2020 |

Status: Decided

Erection of a dwellinghouse (plot 31 - change of house type)

Land 30 Metres South East Of Wallace Park Duncricvie Glenfarg

Ref. No: 20/00815/FLL | Received: Fri 26 Jun 2020 | Validated: Thu 09 Jul 2020 |

Status: Decided

Erection of 7 dwellinghouses

Land 110 Metres South East Of 10 Hilton View Hilton View Glenfarg Perth And Kinross

Ref. No: 20/01157/FLL | Received: Fri 21 Aug 2020 | Validated: Wed 02 Sep 2020 |

Status: **Awaiting decision**

Erection of an energy from waste facility including ancillary buildings, formation of vehicular access, infrastructure, landscaping, drainage and associated works

Binn Farm Glenfarg

Ref. No: 20/01242/FLM | Received: Fri 04 Sep 2020 | Validated: Fri 04 Sep 2020 |

Status: **Awaiting decision**

Erection of a dwellinghouse (revised design - plot 7)

Land 30 Metres South East Of Wallace Park Duncricvie Glenfarg

Ref. No: 20/01415/FLL | Received: Thu 01 Oct 2020 | Validated: Thu 15 Oct 2020 |

continued overleaf

ALPHAVET VETERINARY CENTRE

39 High Street, Kinross, KY13 8AA

For a caring professional service for all domestic pets



TELEPHONE 01577 863 328

E-MAIL: alphavet@alphavet.co.uk

WEBSITE: www.alphavet.co.uk

Scotland's 1st Veterinary Practice Website!

Consultations by appointment

Monday to Friday 9.00am to 12.00 noon
and 4.00pm to 6.00pm

Saturday 9.00am to 12.00 noon

Reception is open: Monday to Friday 8.30am to 6.30pm
and Saturday 9.00am to 12.00 noon

***For our 24-hour Emergency Service
please telephone 01577 863 328***



Stressed about the little jobs like ironing



Sonias ironing
Milnathort
£15 per black bag
Free pick up and delivery
Give me a call or text
07712454625

Home Cleaning Service



We are two mums that offer a reliable, local and efficient cleaning service.

Whether it be a weekly clean, two weekly, monthly, one off or end of tenancy clean we cater to all.

We are both experienced cleaners and provide a wide range of bespoke cleaning services to suit all our clients needs.

Please don't hesitate to give us a call for a FREE quotation.

Glenfarg and surrounding areas



Telephone: 07745 869698 or 07495 294146

Status: **Awaiting decision**

5. APPOINTMENT OF OFFICE BEARERS

Cllr Ponton requested that the GCC continues with its current office bearers for the 2020 to 2021 period. The present holders agreed therefore:

GCC Chair is CCllr Ponton, GCC Vice Chair and Secretary is CCllr Pilmer, GCC Treasurer is CCllr Horsman.

6. APPOINTMENT OF SUB COMMITTEES

Planning –	CCllr Duncan
Emergency Plan –	CCllr Fraser
Transport –	CCllr Fraser
Communications and Media –	CCllr Warder
Lochelbank Wind Farm Panel –	CCllr Pilmer
Data Controller -	CCllr Pilmer
Minute Secretary –	G.Christie

7. APPOINTMENT OF FINANCIAL AUDITOR

Cllr Horsman stated that the present auditor would continue. However, there was another offer should the present Auditor be in a position to handover if they so decided.

8. MEETING DATES FOR 2021

All Mondays unless stated otherwise:

11th January, 1st March, 3rd May, 5th July, 6th September, 1st November (AGM).

AGM CLOSE OF MEETING

GCC Chair CCllr Ponton then thanked all those in attendance. The meeting closed at 8.00pm.

**The next Annual General meeting of the Glenfarg Community Council
will be held 7:00pm on Monday 1st November 2021**

YOUR LOCAL PLUMBER

**NO CALL OUT CHARGE - NO JOB TOO SMALL
DISCOUNT FOR SENIOR CITIZENS**

- Boilers - New Installations, Repairs and Servicing (OIL, NG & LPG) & Landlords Safety Certificates
- Bathrooms - New Installations, Upgrades & Shower Repairs
- Central Heating - Radiator valves repaired & replaced, system descale & flush, new radiator installations, Under floor heating, Fitting of gas hobs & cookers
- Dripping Taps - Outside Taps - Plumbing in washing machines & dishwashers - Toilet Repairs - Drains etc



**DOUGLAS MILLER
01577 861623**



Stewart Funeral Directors

14 High Street, KINROSS KY13 8AN
Tel. (01577) 864607



**Modern Hygienic Preparation Room
Private Family Viewing Suite
24 Hour Personal Service
Specialist Ambulance Transfers
Funeral Planning Consultations
Memorial Sales by Regency Memorials**

24 Hour Emergency Service Tel. (01577) 864607

Glenfarg Community Council Monday 2nd November 2020 Business Meeting 8:00pm

Agenda

Welcome

- 1. Apologies**
- 2. Approval of last business meeting Minutes**
- 3. Action Points update**
- 4. Planning Report**
- 5. Police Report**
- 6. Finance Report**
- 7. AOCB**

Welcome

GCC Chair Cllr Ponton thanked her team for their attendance through email and expressed her gratitude to the owners of the Village shop, to all villagers and many others for their valued help at this troubled time in our community.

Attendance through ZOOM Meeting: Cllr Ponton, Cllr Pilmer, Cllr Horsman, Cllr Fraser, Cllr Duncan, G.Christie Minutes Secretary, PKC Cllr Purves and PKC Cllr Robertson.

- 1. Apologies** – Cllr Warder
- 2. Approval of last business meeting Minutes.** Proposer Cllr Fraser, Seconder Cllr Ponton
- 3. Action Points update:**

Crash barriers

Cllr Purves reported that the matter had been raised with the requisite people in PKC and that further feedback from the GCC with regard to the exact areas could be an advantage in stating a case for remedial work. Further discussion took place regarding the road condition and the reapplication of an anti-slip surface. There was a suggestion to seek assistance from the Binn Group however it was agreed that PKC be written to with the inclusion of a road map highlighting the roadside areas of concern for improvement. Cllr Robertson agreed to provide the PKC contact details to the GCC Secretary. *Cllr Pilmer*

Greenbank Crescent

Cllr Robertson discussed the matter of concern and stated that the relevant authorities were aware of anti-social behaviour in the area and that it was being addressed.

Footpath from Ladeside to Ash Grove

It was agreed to monitor any feedback from the village residents should the pathway appear to deteriorate. *All GCC Cllrs*

G.Christie co-opted Cllr

G.Christie's co-option has been resubmitted to the Community Team at PKC. Cllr



WASP NESTS -
ELIMINATION
GUARANTEED

AVAILABLE 7 DAYS A WEEK
LOCAL RELIABLE PROFESSIONAL
SPEEDY SERVICE FOR EMERGENCIES

All pests professionally dealt with
Free Surveys Fully Insured

Domestic Commercial Agricultural
Contract work or One-off visits

wasps • bees • ants • rabbits • squirrels
flies • fleas • moles • bedbugs • rats • mice
moths • spiders • insect infestations • rabbit fencing
bird proofing • pest birds • all other problem pests

Call us to sort out your pest problem

01738 813751

07767 353535

www.andylawpestcontrol.co.uk

Bridge of Eam, Perth.



Ponton requested that the GCC Secretary was to keep pursuing the matter for a satisfactory outcome for G.Christie. *CCllr Pilmer*

Christmas Lighting

CCllr Fraser reported that the matter was in hand with the relevant PKC department and that we shall have the increased display in time for the festive period

Covid Response

CCllr Fraser reported that a further £260 had been secured from Community Covid Fund offers. Further discussion with the Village shop owners shall take place to establish where the expenditure of the fund can be best directed to. *CCllr Fraser*

Glenfarg Website

CCllr Fraser reported. This topic has been withheld whilst we allow the impact of the lockdown to ease. It is to be revisited in due time.

20MPH limits in our area

CCllr Ponton reported that the 20mph speed restrictions within the confines of the village had been installed by PKC and that we shall see speed reduction amendments to a number of roads. However, it was discussed further that some of the other roads within the village could benefit from a 20mph extension given consideration to what has now been implemented for the Primary school routes. A discussion took place regarding the Main Street and the use of speed ramps/humps as well as a reduction to 20MPH. It was agreed that PKC be written to with further suggestions about this matter. *PKC Cllr Purves*

4. Planning report

CCllr Duncan stated that there were a number planning matters to be discussed per his report, please see below. However, what was of concern was the proposed development by the Stephen House building company regarding the seven planned properties adjacent to the Main Street. It was pointed out that the proposed development of the properties indicated that their road access was direct on to the Main Street itself. Presently this is a 40MPH limit and that it was a matter of concern that there may not be a request to extend the 30MPH limit prior to those properties. It was agreed that two points require to be clarified with PKC planning and they are: access to the Main Street and Speed limit. *CCllr Duncan*

Erection of 7 dwellinghouses

Land 110 Metres South East Of 10 Hilton View Hilton View Glenfarg Perth And Kinross

Ref. No: 20/01157/FLL | Received: Fri 21 Aug 2020 | Validated: Wed 02 Sep 2020 | Status:

Awaiting decision

Erection of an energy from waste facility including ancillary buildings, formation of vehicular access, infrastructure, landscaping, drainage and associated works

Binn Farm Glenfarg

Ref. No: 20/01242/FLM | Received: Fri 04 Sep 2020 | Validated: Fri 04 Sep 2020 | Status:

Awaiting decision

Erection of a dwellinghouse (revised design - plot 7)

Land 30 Metres South East Of Wallace Park Duncricieve Glenfarg

Ref. No: 20/01415/FLL | Received: Thu 01 Oct 2020 | Validated: Thu 15 Oct 2020 | Status:

Awaiting decision

J. Stewart & Son

Landscaping and Paving



Landscaping and Ground Works



Ask about turfing

ALL WORK IS CARRIED OUT BY TRAINED CRAFTSMEN
AND IS FULLY GUARANTEED

Call for a **FREE** no obligation estimate

Tel: 01738 245465

Mob: 07516 595192

Quality just can't get any better!

LANDSCAPING & DRIVEWAYS

Monoblock • Stone Paving

Slabbing • Decking

Sandstone Walls Re-rendered

Drainage • Gravel • Cobbles

Heritage • Cotswold Drives

Patios & Paths • Parking Areas

Land Engineering

Tidying and Full Garden Service

Tree Surgery

Give your feet a Treat



Private podiatry/chiropractic in
the comfort of your own
home.

H.P.C. Registered

Lisa Allison BSc Tel 01577 830678

5. Police Report

Cllr Pilmer stated that there were no serious crimes within our community to report. Police Scotland's Area Commander's Bulletins are added to the Grapevine FB on a weekly basis. Additionally, following complaints by residents and one business owner about the speed of all types of traffic through the village, especially on Main Street, Police Scotland CPT carried out a speed check although on the day they did not have to report any offenders. Speed monitoring will continue to be on the Community Policing Team's agenda.

6. Finance Report

Cllr D.Horsman stated:

TREASURER REPORT 2nd November 2020

1. GCC – BALANCE ON ACCOUNT £424

Income – Nil

Expenditures – Nil

2. GCC NEWSLETTER ACCOUNT – BALANCE £10 709

This balance is made up as follows :

	Newsletter	Microgrant	Nursing Fund
		£	£
At 7 th September 2020	5 393	1 595	4 011
Income	Nil	Nil	Nil
Expenditures/payments	290	Nil	Nil
	<hr/> 5 103	<hr/> 1 595	<hr/> 4 011

Income/Expenditures since last meeting:

Newsletter:

Income – Nil

Expenditures – £198 Newsletter printing £82 E Neuk First Responders £9.90 Cllr travel expenses

Microgrant:

Income – Nil

Expenditures – Nil

3. SCHOOL FUND £141

No Change

TOTAL FUNDS HELD £11 274 at 2nd November 2020



TYREFAIR LIMITED

Unit 11
Bridgend Industrial Estate
Kinross

There is now a specialist tyre and battery dealer in Kinross that opens every day of the week, and has tyres and batteries at prices to suit your budget. **TYREFAIR** is a family business, with staff that have many years of professional experience in the tyre trade, and you can find them at **Unit 11, Bridgend Industrial Estate, or telephone on KINROSS 865656**. **TYREFAIR** welcomes trade account and offers the following goods and services:

- New tyres for cars and vans
- Guaranteed re-treaded tyres
- 4x4 tyres for business and leisure
- High performance tyre specialists
- Wheel alignment
- Top brand quality batteries
- Puncture and Vulcanised repairs
- Number plates made while-you-wait

TYREFAIR has a comfortable lounge, where you can relax while the work is carried out and you can rest assured that we will treat your vehicle with the care and respect that you demand.

WHY NOT CALL IN, OR TELEPHONE NOW FOR MORE INFORMATION?

KINROSS (01577) 865 656



*Individually designed
hand-made cakes
for all occasions*

07814 239142

Email: info@leighsmithcakes.co.uk

View photos at
www.leighsmithcakes.co.uk
Facebook: Leigh Smith Cakes



Woodlands Bed and Breakfast

Church Brae, Glenfarg

www.woodlands-bandb.co.uk

Off Church Brae at end of lane below church

Ample car parking.

Two double bedrooms with king size beds

Resident's lounge

To book phone Cedric or Heather Wilkins

01577 830300

A discussion took place with regard to the School Fund and how best that this should be “wound down”. The donation of the remainder of the funds monies to the general well being of the residents through the Wallace Park improvement or the continued support to the Primary School leavers through the provision of School ties to the leavers on their progression to Secondary education or to a charitable cause. Further discussion is to take place. *CCllr Horsman*

7. AOCB

56 & 55 Bus routes

CCllr Ponton reported that discussions with PKC Transport department are still ongoing in consideration of the 56 service. It was envisaged that an additional timed service be put into place for transit to and from Perth. However, we will await confirmation of this point and notify residents through our media facility in due course. The 55 service to Kinross has commenced and it has been received warmly. Nevertheless, it was discussed that the service was rather quiet and that NHS Kinross Clinic times and other public facilities/groups that would be ongoing in “normal” times may not be tying in with the 55 service. The GCC can only request that residents try their best to make use of the 55 service.

Defibrillator

CCllr Fraser reported that the Defibrillator has been checked and returned to service following its recent use. Cllr Fraser reported further that he had written to K.Colville of PKC highlighting the requirement desired from other communities/organisations to ensure that their Defibrillators are maintained on a regular basis.

Emergency Plan

CCllr Fraser stated that he will carry out a review of the plan as it is in its current format, review it and publish an updated version. *CCllr Fraser*

Glenfarg Hotel

CCllr Ponton raised the matter of the exterior condition of the building and that there was an overall public concern. It was noted further that barriers blocking off the hotel car park have in fact been pushed aside and requested of PKC to be aware of the continuing deterioration of this property and its grounds. Cllr Robertson was asked to remind the relevant PKC department about this property. *Cllr Robertson*

Overgrown Hedges on Public footpaths and elsewhere

CCllrs raised the matter of hedging starting to impeded onto pavements and other public accesses within the village. Cllr Robertson stated that home owners are expected to ensure that they keep Public footpaths clear and to avoid people having to step on to the roadway. The matter can be reported by any person through the PKC website for Road faults. Once a matter is reported to PKC it is progressed through the Greenspace Team nevertheless it can take time for action to be instigated. This can be in one of two formats: 1) PKC carry out the work on public entrances/roadways or 2) the home/business owner is contacted to have the trimming

**Joan Cotsford,
Independent
Usborne
Organiser**



**Quality children's books that
everyone loves**

For new baby or birthday gifts, fiction and
non-fiction from birth to adult, homework
help, jigsaws, sticker books and more!
Free local delivery

Facebook: @bookhappyjoan
bookhappyjoan@gmail.com



For all aspects of
PIANO TUNING
and repair
David R. Watt
(01577 830 345)

Genuine Hardwood logs by
the trailer-load or part load.
Logs cut, split and delivered
to suit individual needs.



For further
details ring
Ewan
Cheape
Glenfarg
830 349

work carried out by them or by PKC at a charge.

The GCC urges residents to ensure that Public footpaths adjacent to their properties be kept clear of hedging thus avoiding the need for pedestrians to have to step onto the roadway without good reason.

Wallace Park update

A delay has taken place with the finishing off of a pathway. This will be addressed in due time with consideration to the availability of the pathway material and weather conditions.

A discussion took place with concern to a suggested proposal, but not officially confirmed, for hard standing in Wallace Park with regard to the Tennis Club for vehicular access. A route that is currently a walkway/cycleway was suggested as being a likely route however, the Community Council would not support the suggested proposal unless it is as a result of a full Village consultation from interested parties.

Close of meeting at 9:00pm

Next proposed GCC Business Meeting is Monday 11th January at 7:30pm. Format to be confirmed.

Brian Todd Landscapes

1 Ash Grove, Glenfarg

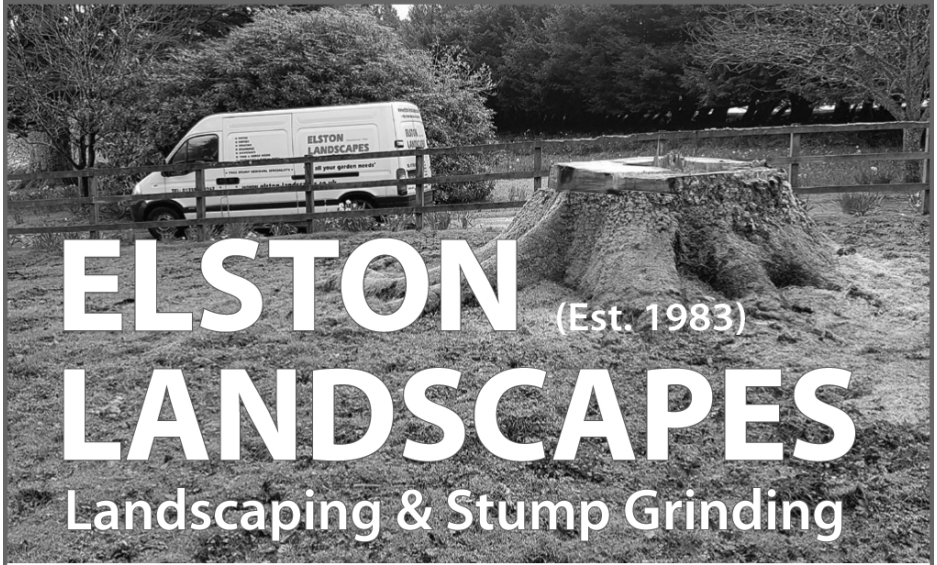
Contact: 01577 830 728

or 07718 916 318



**Seeding, Wall Pointing, Repairs,
Patios, Driveways, Hedge Cutting,
Fencing, Gutters cleaned and repaired,
Garden Maintenance, Slabbing
& all other odd jobs**

**FREE
ESTIMATES
COMPETITIVE
RATES**



ELSTON (Est. 1983) LANDSCAPES

Landscaping & Stump Grinding

TREE STUMP REMOVAL SPECIALISTS

Tree and shrub planting

Seeding & Turfing

Paths, Patios & Driveways

Hedge Cutting, Pruning and Tree Surgery

Fencing, Trellis & Pergolas

Garden Drainage

Operated Mini Digger, Dumper & Turf Lifter For Hire

01738 850 742

keith@elston-landscapes.co.uk

www.elston-landscapes.co.uk

Fully Qualified & Insured



Index of Advertisers

Home Improvements and Repairs	Andrew Miller Fireplaces 44 Andy Law Pest Control 58 Austin Heating & Electrical. 50 Binn Skips 13 Brian Todd Landscapes 65 Douglas Miller (plumber) 56 Elston Landscapes 66 Glenfarg Garage 41 John Allison (electrician) 52 J. Stewart & Sons (landscaping) 60 QwertyIT (computer repairs). 46
Health & Beauty	Ferrier & Mackinnon Optometrists 19 Indoor Play Health & Fitness. 10 Kinross Physiotherapy 48 Lisa Allison (chiroprody) 60 Silver Lining Hair Studio 42
Shops	Glenfarg Village Store 28 John Anderson (Fish Van). 29
General Services	Alphavet Veterinary Centre 54 Café Biba. 19 Cameron & Greig Veterinary Surgeons . . . 42 Cyprus Apartment Let. 11 Earnside UK & Continental Travel 7 Gillian Forbes (Stone Carving). 50 Home Cleaning Service. 54 IJC Bookkeeping & Payroll. 48 Leigh Smith Cakes 62 Letham Farm Glenfarg Logs 64 Piano Tuning & Repair 64 Pooch Perfect (dog grooming) 40 Sonias Ironing 54 Stewart Funeral Directors 56 Tails & Trails (dog walking) 40 Tyrefair Limited 62 Usborne (Books). 64 Woodlands Bed & Breakfast 62

General Information

Doctors' Surgeries

Loch Leven Health Centre, Muirs, Kinross - **01577 862 112**

Daytime emergency number - **01577 865 252** - NHS 24 Out of Hours - **111**

Library

The van stops at Main Street on every other Tuesday from 12 to 1pm

Mobile Post Office

Stops outside the Joiner's workshop, Ladeside

Mon 11.30am-12.30pm : **Wed** 11.15am-12.15pm : **Fri** 1.15pm-3.15pm

Recycling Points

Glenfarg: Arngask School car park for cans, paper and glass, Arngask School playground for clothing and shoes.

Wallace Park car park for glass.

Kinross: Causeway Car Park, Sainsbury's, Station Road, for cans, glass, paper and textiles.

Bridgend Industrial Estate Open Mon-Fri 9am-7pm, Sat-Sun 9am-5pm

Milnathort: Thistle Inn, Black Loan for cans, glass and paper

Kerbside Recycling Service: Waste Collection Dates						
Green lid (Non-recyclable waste) Blue lid (Paper, cardboard, cans, plastic) Brown lid (Garden & food waste)						
Glenfarg	December	Green Lid	Fri	4	18	
		Blue Lid	Fri	11	25*	
		Brown Lid	Thu	3	17	31
	January	Green Lid	Fri	1*	15	29
		Blue Lid	Fri	8	22	
		Brown Lid	Thu	14	28	
	February	Green Lid	Fri	12	26	
		Blue Lid	Fri	5	19	
		Brown Lid	Thu	11	25	
Duncreevie	December	Green Lid	Thu	3	17	31
		Blue Lid	Thu	10	24	
		Brown Lid	Mon	7		
	January	Green Lid	Thu	14	28	
		Blue Lid	Thu	17	21	
		Brown Lid	Mon	2	16	30
	February	Green Lid	Thu	11	25	
		Blue Lid	Thu	4	18	
		Brown Lid	Mon	13	27	

* Collection dates may vary over the festive period. Please check media outlets or contact the Customer Service Centre 01738 476476